

# ADANI

## SECURITY X-RAY SCREENING SYSTEMS

PEOPLE SCREENING

PARCEL, BAGGAGE AND SMALL CARGO INSPECTION

CARGO AND VEHICLE INSPECTION

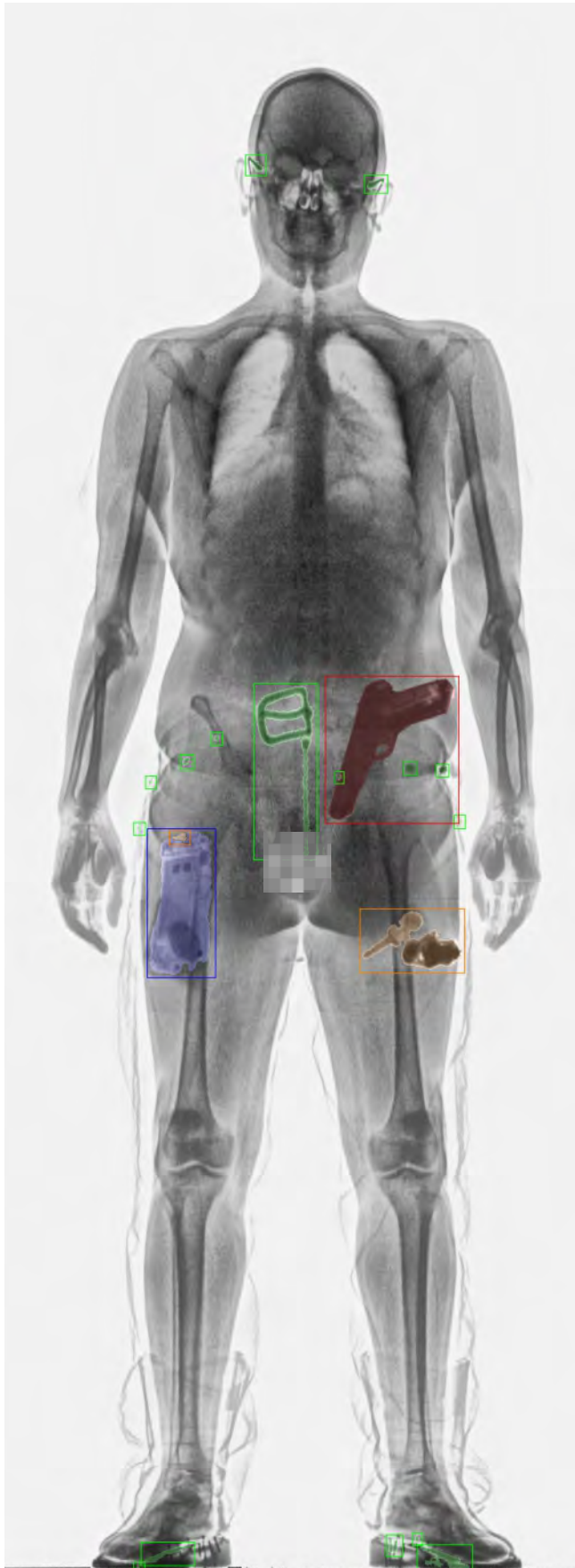
[www.adanisystems.com](http://www.adanisystems.com)

- ADANI (est in 1991) is a world-class high-technology corporation with full customer-focused disruptive innovation cycle in the security sector. The unique product range of X-ray body scanners, baggage, cargo and vehicle inspection systems developed and manufactured by ADANI provides safety and security for individuals, society and the state from the potential risks and existing terrorist threats.
- ADANI was the first company to develop the transmission X-ray full body scanner and remains the market leader with more than 960 installations of COMPASS system in more than 70 countries. Total number of installations exceeds 2190 security units worldwide.
- ADANI X-ray technology is compliant with ANSI 43.17-2009 regulations highlighting the product safety and ensuring that the equipment could be used safely on a regular basis.



# PERSONAL SECURITY SCREENING

## INTELLIGENT THREAT DETECTION



• Automatic detection and indication of the prohibited items and threats on or inside the human body using the unique AI algorithms.

- elements of clothes
- electronic devices
- dangerous items and threats
- other items non-belonging to human body





# PERSONAL SECURITY SCREENING

## SMART INNOVATIONS IN PERSONAL INSPECTION

### SMART DETECTION

- Automatic threat detection software algorithms
- Operator assistance & control

### SMART AR IMAGING



### SMART MODULAR

- 4-joint construction
- Fast installation & easy alignment
- Easily relocatable
- Country independent power source

### DETECTED OBJECTS

- Narcotics
- Precious stones and metals
- Weapons
- Explosives and liquids
- Detonators
- Knives and blades
- Electronics and phones

## COMPASS SMART

NEW GENERATION OF THE LEGENDARY SINGLE VIEW SCANNER



## COMPASS SMART DV

TRUE DUAL VIEW

- Possesses all advantages of the SMART platform and provides two independent images of the inspected person from different angles.
- One image in the best possible quality reflects only stomach area as it is commonly used for contraband of small items and drugs inside the body. Another image reflects a whole body of the inspected person including stomach area from a different angle.



# COMPASS MIP

## MOBILE INSPECTION POINT

- COMPASS MIP is a van based security inspection point that comprises a full body X-ray security system and operator workstation.
- It was designed as a mobile and most flexible body scanning solution for the use by law enforcement agencies.
- The system has an autonomous power supply (no infrastructure required).
- The inspection point operates well in any type of weather conditions.



## XSC - X-RAY SHIELDED CABIN

- Absolute outer X-ray safety.
- The X-ray protective glass and video surveillance system preserves the transparency of the scanner and scanning process.



## INTEGRATION

- Unique ADANI software provides full and effective integration of the inspection systems into any security infrastructure with the possibility to connect to any of the peripherals including document scanners, cctv, fingerprint scanners, barcode readers, etc.



# PARCEL, BAGGAGE AND SMALL CARGO INSPECTION

## SINGLE VIEW BAGGAGE INSPECTION SYSTEMS

---

BV 5030CA



BV 6080



BV 5030



BV 100100TB



BV 6045



BV 160165/160180



## DUAL VIEW BAGGAGE INSPECTION SYSTEMS

**BV 6045DV**



**BV 7080DV**



**BV 100100DV**



## CUSTOMER-FOCUSED SOLUTIONS



US PAT # 9,709,694 B2

### **BV M.A.X.**

#### MATTRESSES AND INMATES' PERSONAL PROPERTY INSPECTION

BV M.A.X. is a compact movable conveyor type X-ray screening system with automated contraband detection assistance software for fast, effective and contact-free inspection of mattresses and inmates' personal property.

Due to the compact design and special wheels it can be easily relocated and deployed wherever security inspection is needed. BV M.A.X. will easily fit through the most of standard interior doorways.

## MOBILE INSPECTION POINT FOR BAGGAGE SCREENING

- An effective temporary checkpoint solution for inspection of personal belongings, hand luggage and small cargo.
- The device is based on baggage inspection system embedded into a metal body van.

#### **ADVANTAGES**

- Wide range of tunnel sizes
- Mobility
- Self-sufficiency
- Safety
- Fast deployment





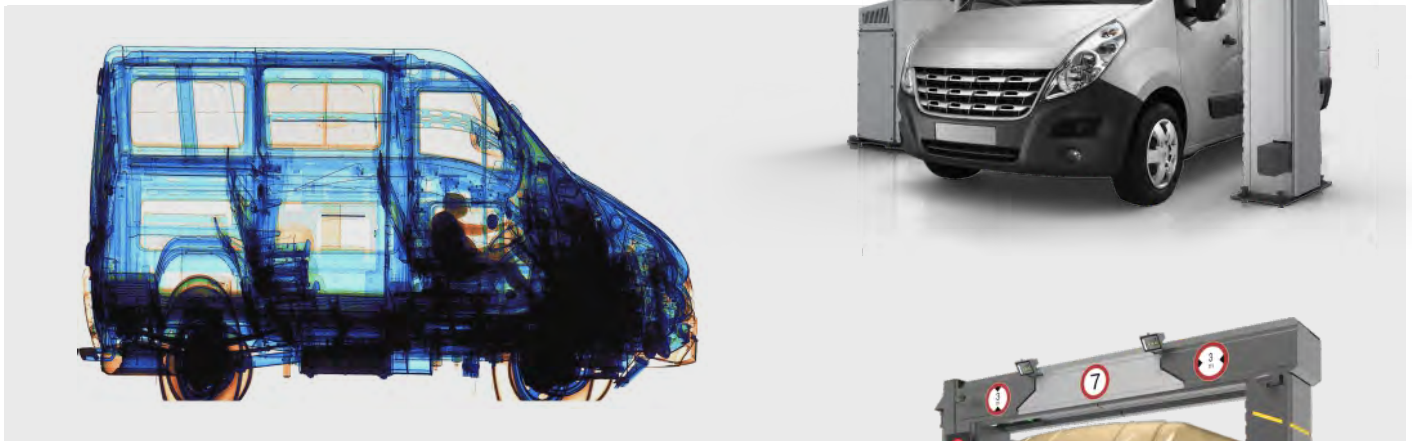
# CARGO AND VEHICLE INSPECTION

PASSENGER VEHICLES, VANS, MINIBUSES

- Designed for detection of dangerous and illegal objects hidden inside the light vehicles, minibuses or vans.
- Due to innovative drive-through portal operation the systems can scan up to 120 vehicles per hour which highlight effectiveness for a high-load traffic areas.
- Systems allow drivers to stay in their vehicles during the inspection process making it really convenient and safe.

## DTP 200LV

PASSENGER VEHICLE  
X-RAY INSPECTION SYSTEM



## DTP 320LV

HIGH PENETRATION  
PASSENGER VEHICLE  
X-RAY INSPECTION SYSTEM



## DTP OPTIONS:

- Weather packages
- Automatic license plate recognition system (ANPR)
- Automatic container number recognition system
- Module for operators
- Infrared access limiting barriers
- UPS
- Ramp and conveyor
- Remote workplace for image analysis
- Radiation monitoring system



## LARGE VEHICLES, TRUCKS AND CARGO

- Systems are designed for the inspection of containers, trucks, air cargo and commercial vehicles with the subsequent identification of the cargo compliance to the transportation documents and able to detect contraband, drugs, weapons, explosives and other dangerous objects.
- A vehicle driven directly through the portal can be inspected without scanning the driver's cab thus increasing the safety of the driver and total throughput.
- A dual energy technology with automatic color coding and material discrimination allows to distinguish organic, inorganic and mixed materials.

### DTP 7500LV

STATIONARY  
X-RAY INSPECTION UNIT



### DTP 7500LVR

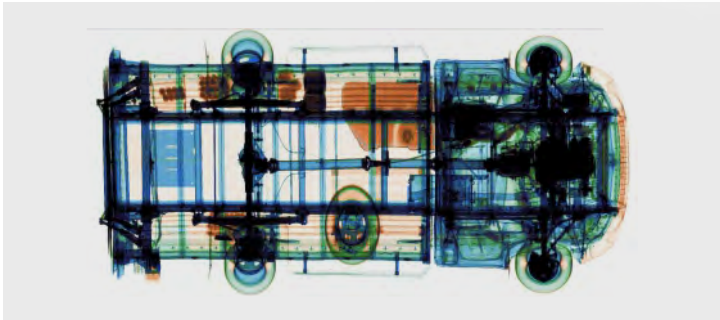
AUTONOMOUS RELOCATABLE  
X-RAY INSPECTION UNIT

- The unit is mounted on the base of 30' maritime container providing extra flexibility using standard transportation means.
- Total deployment time is up to 20 minutes proving its use for operative tasks.



## DTP 200R

RELOCATABLE  
FAST DEPLOYABLE  
X-RAY INSPECTION POINT



- Unique all-in-one inspection point focused on easy relocation. It provides fast automatic deployment and is proven to be the optimal solution for the limited space.

## DTP 320

VERTICAL TOP-DOWN PROJECTION  
X-RAY INSPECTION SYSTEM



## DTP 320/200DV

DUAL VIEW  
X-RAY INSPECTION SYSTEM



## CUSTOMER-FOCUSED SOLUTIONS

### DTP 7500/200UV

UNIQUE MULTI ENERGY  
X-RAY INSPECTION UNIT



- Unique, innovative and extremely effective solution for facilities, security checkpoints, border crossings, military bases with limited space.
- It is especially useful where a total control of both cargo transport vehicles (trucks, vans), their containers and light vehicles is required.
- This unit occupies the smallest area in its class.
- It provides excellent images and additional personnel safety due to X-rays directed upwards.
- The material discrimination technology at different energies is selected for the specific vehicle.

### DTP 6000LVM

MOBILE X-RAY  
INSPECTION UNIT







## ADANI

[security.adanisystems.com](https://security.adanisystems.com)  
[info@adanisystems.com](mailto:info@adanisystems.com)

With continual development of our products ADANI reserves the right to make changes to the design and specifications at any moment and without notice

